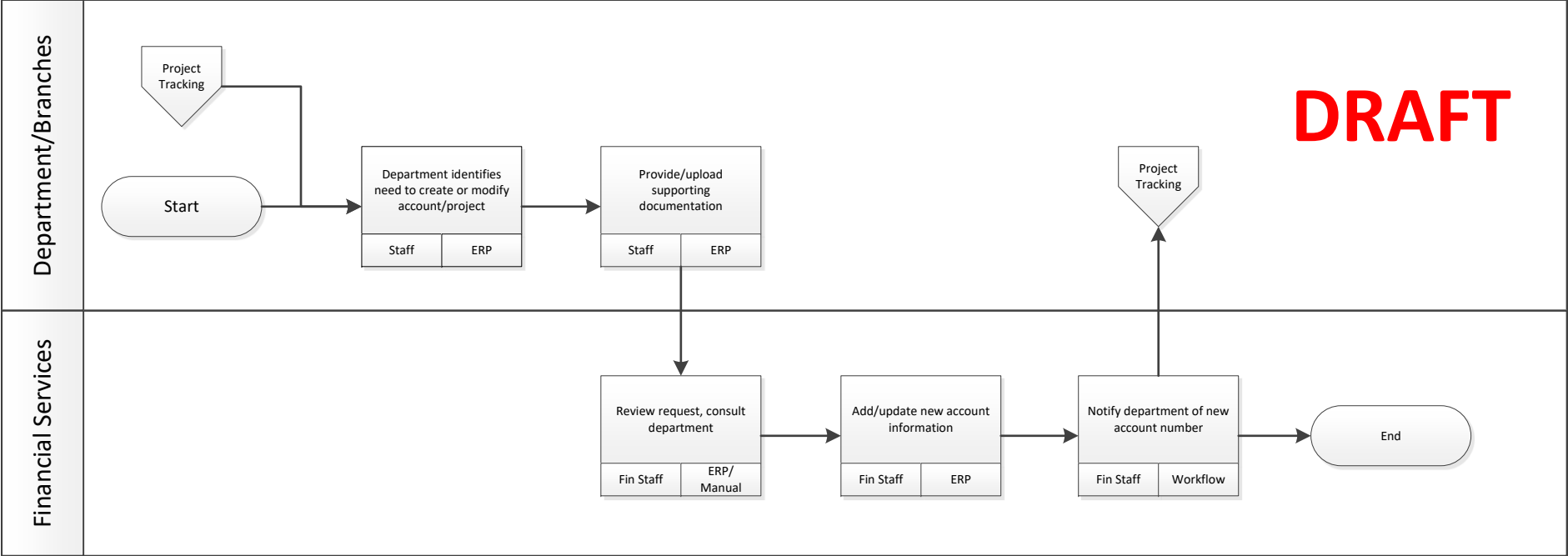
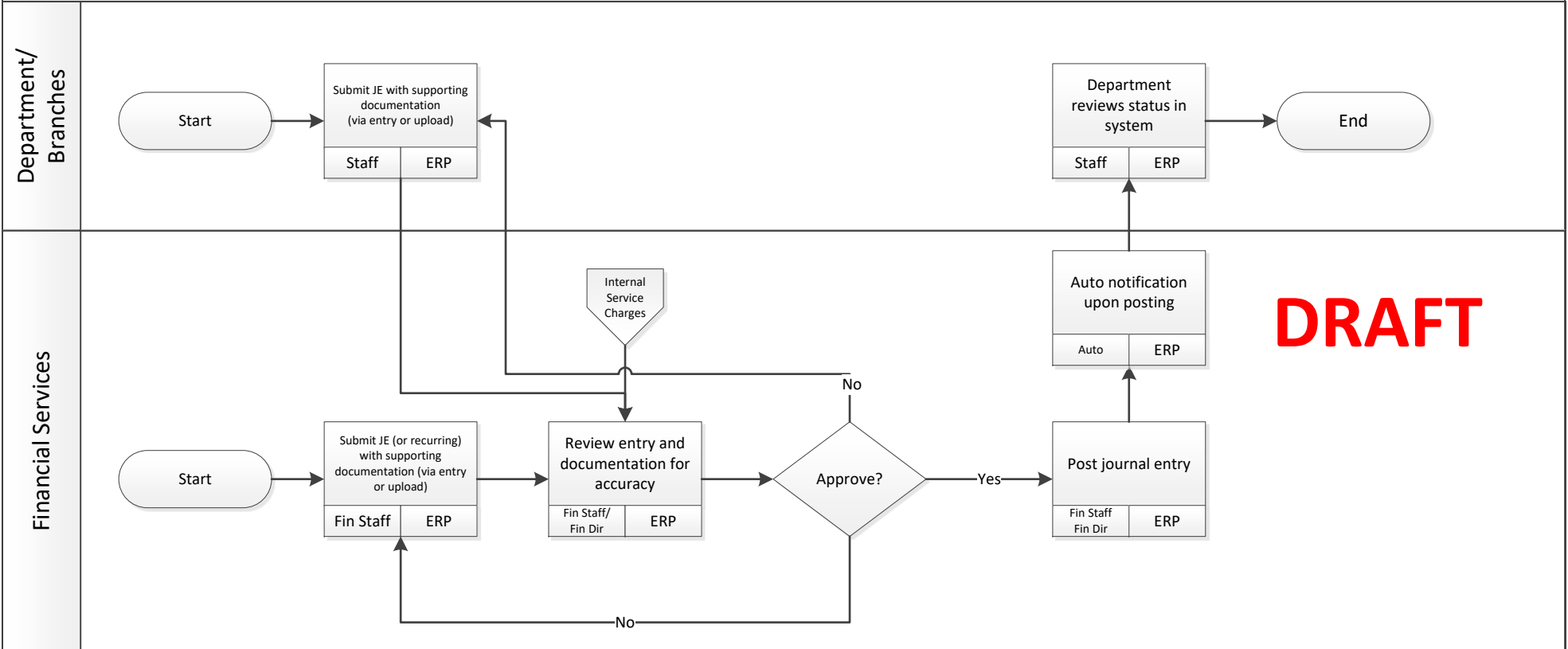


Accounting / Finance
General Ledger Transactions - Chart of Account (CoA) Maintenance
FUTURE

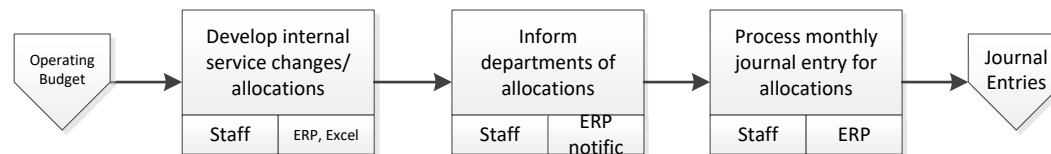


DRAFT



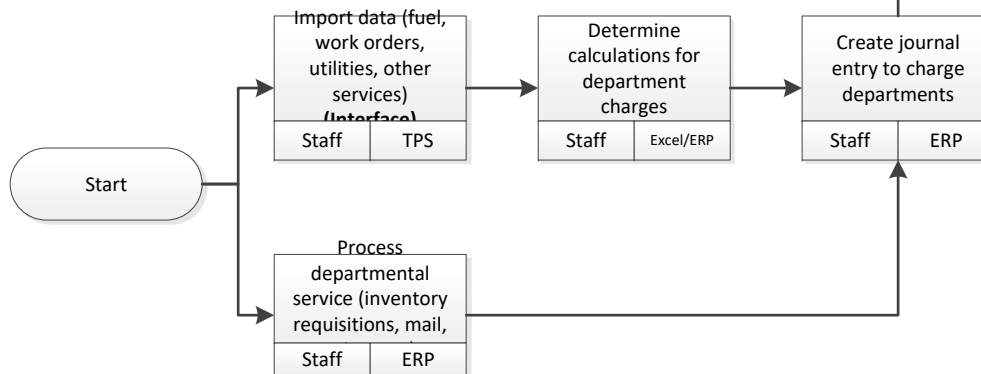


Financial Services



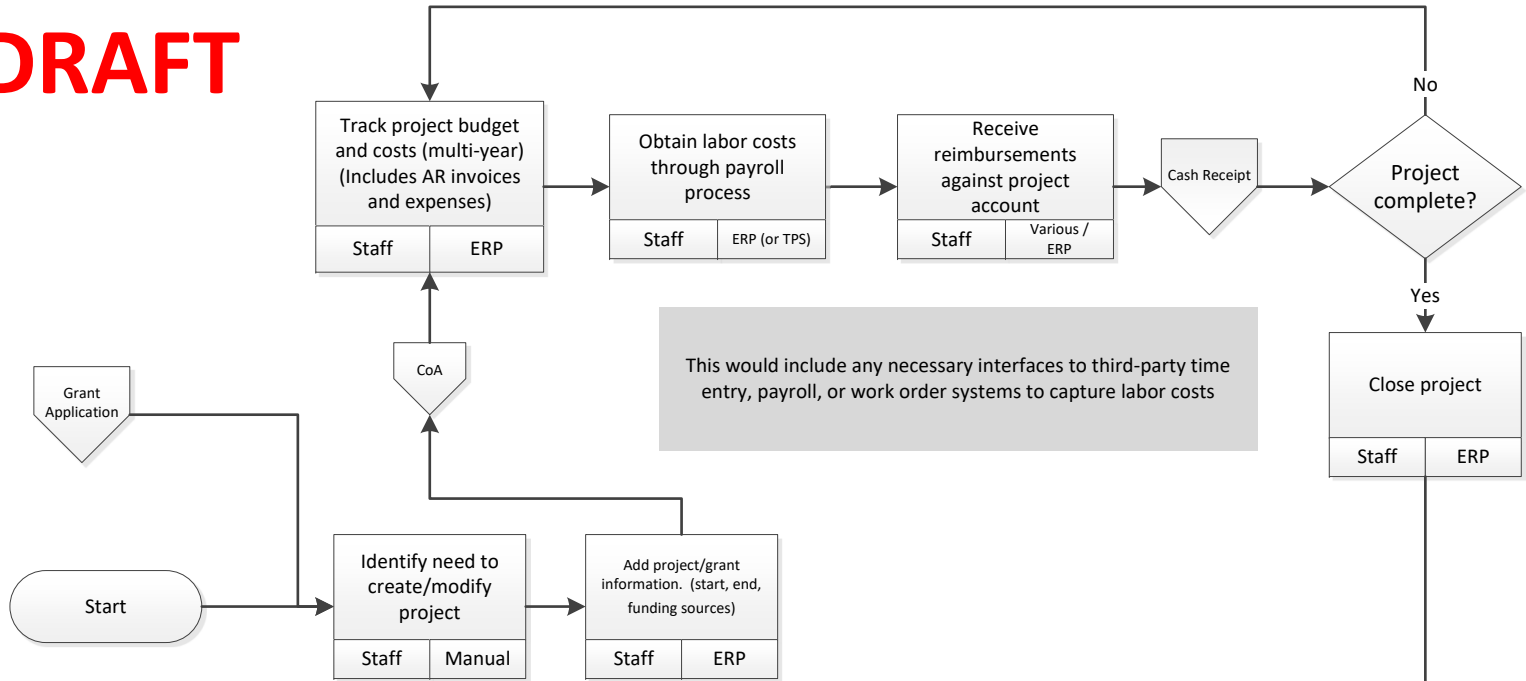
DRAFT

Departments

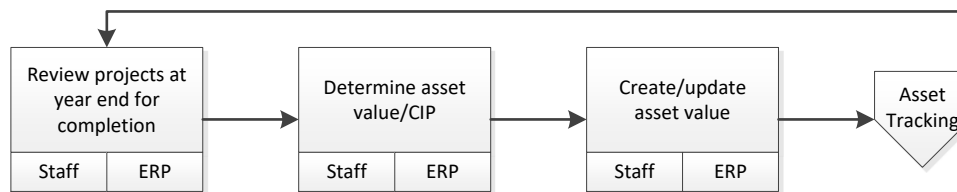


DRAFT

Departments/Branches



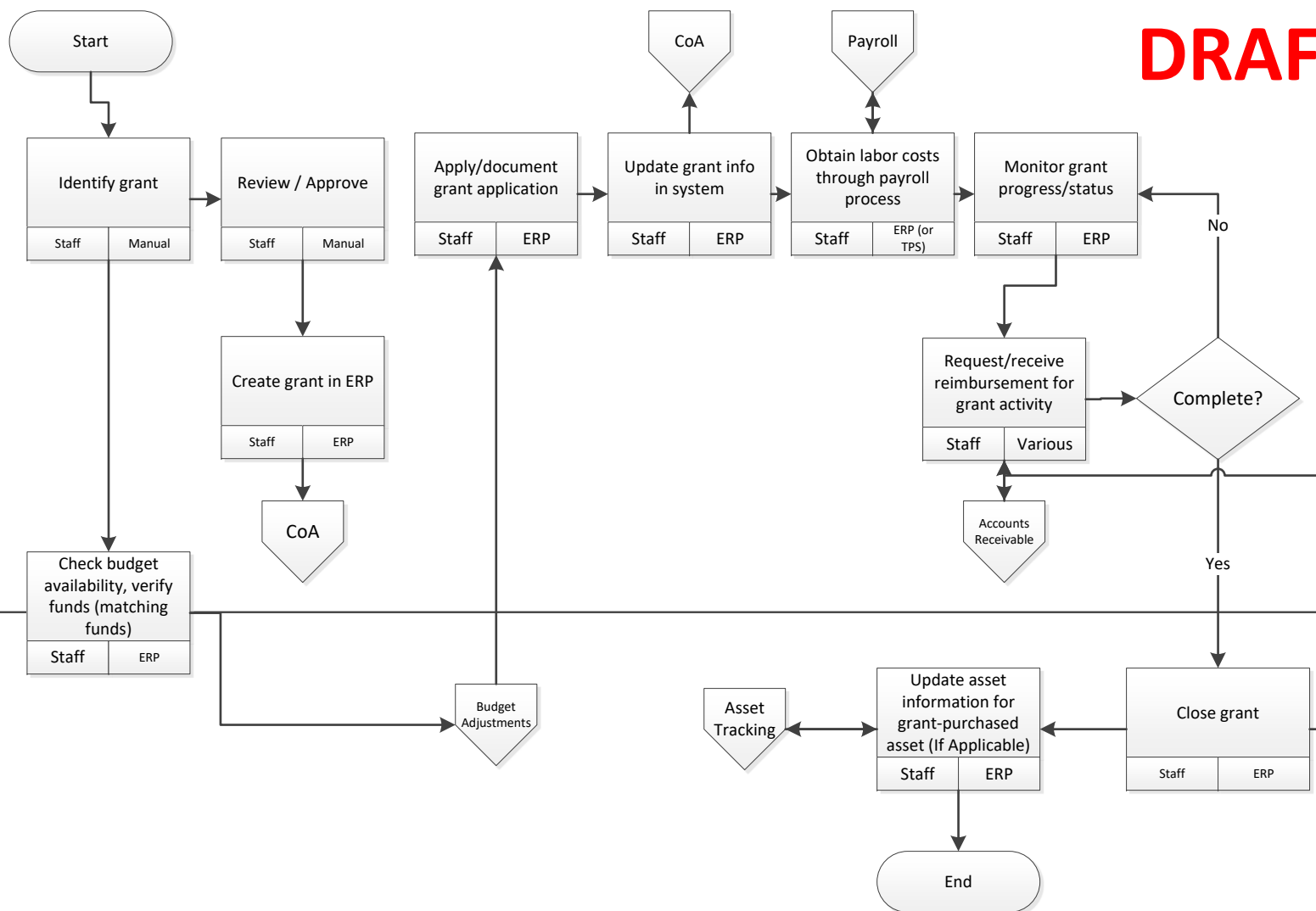
Financial Services

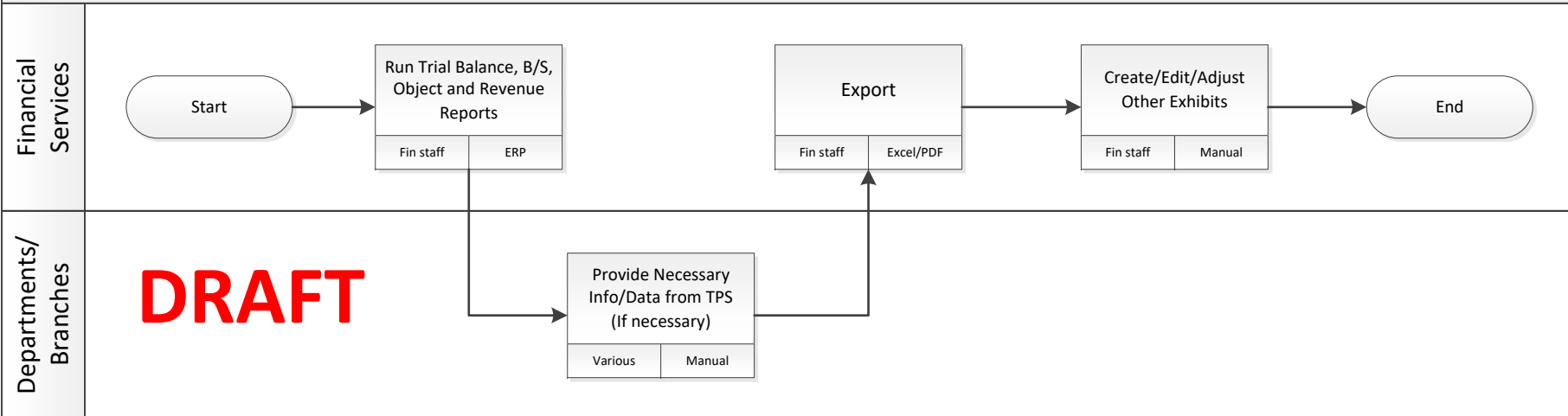


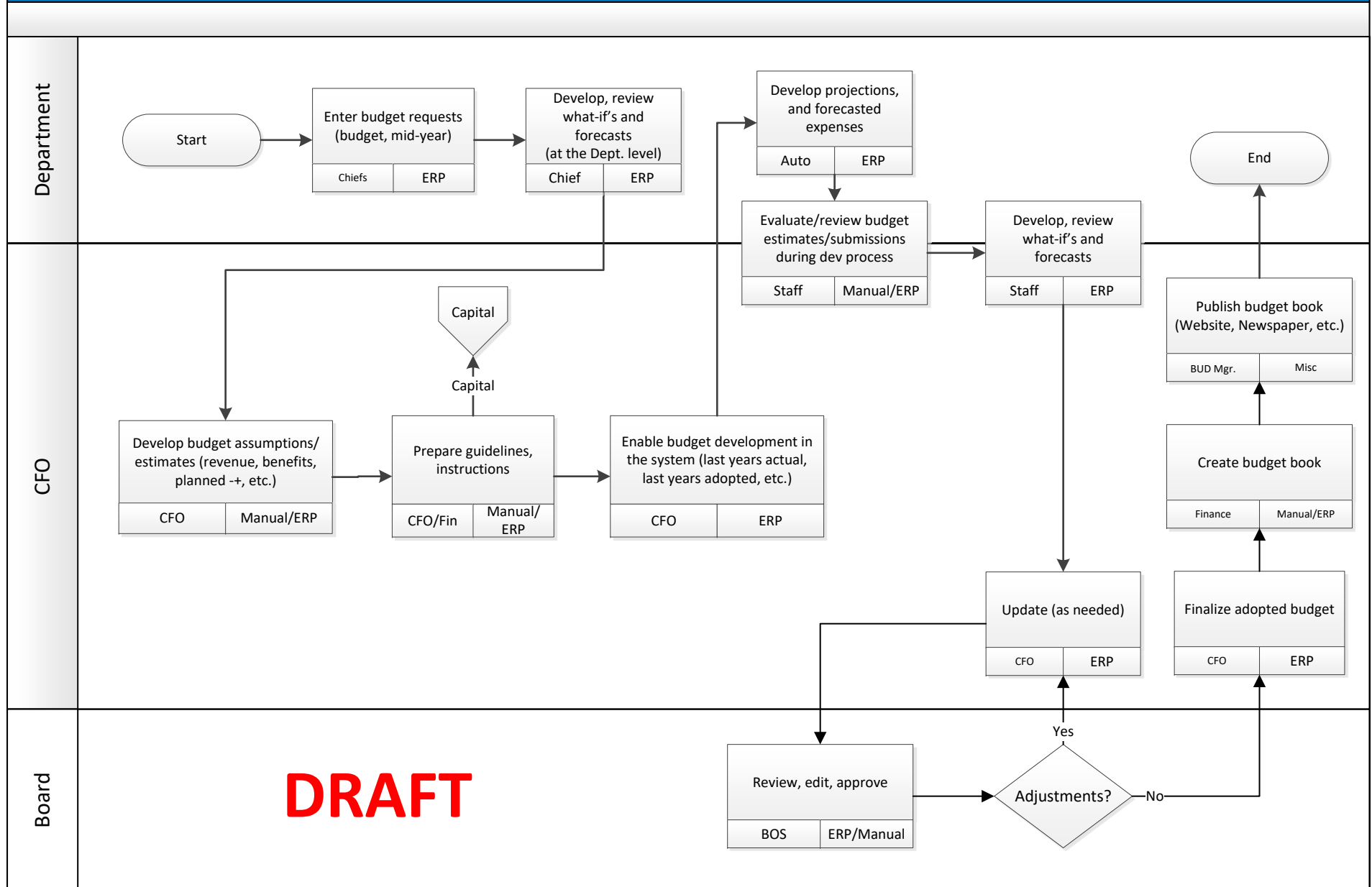
DRAFT

Departments/Branches

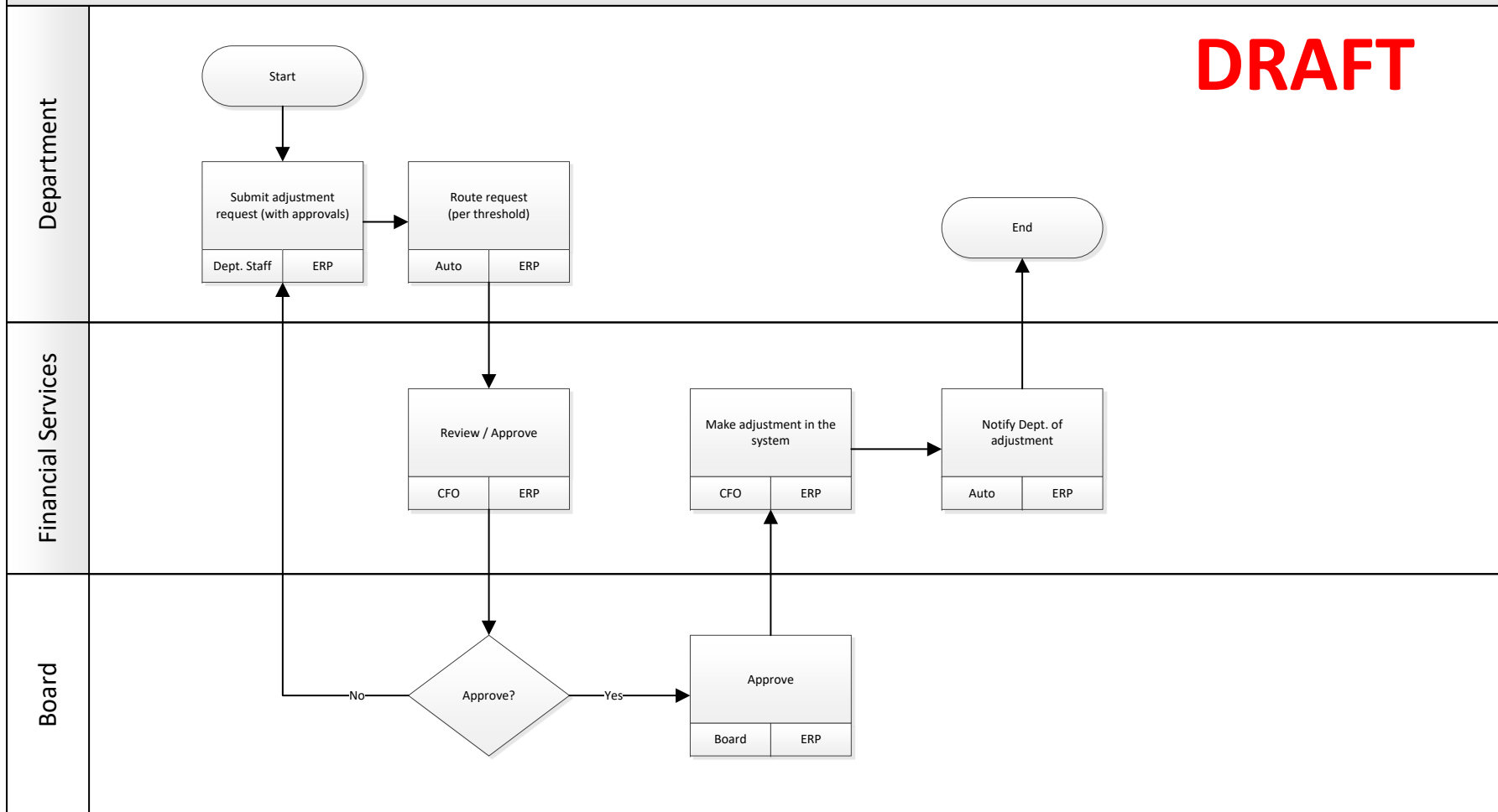
Financial Services

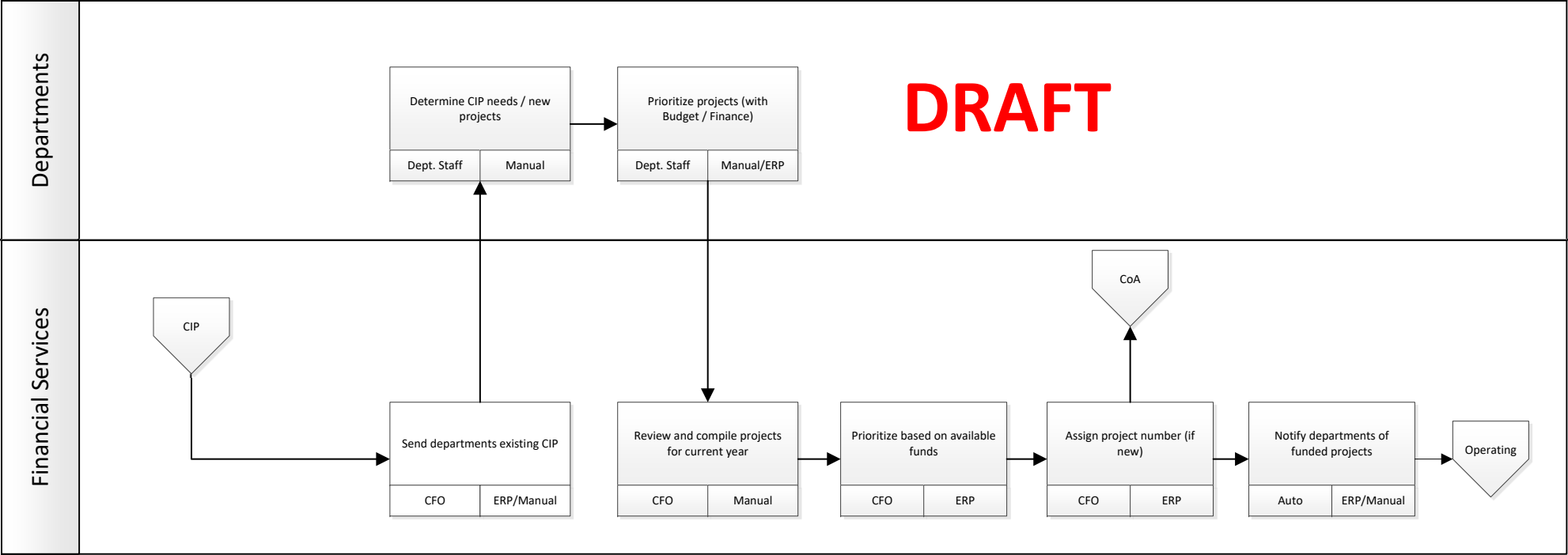




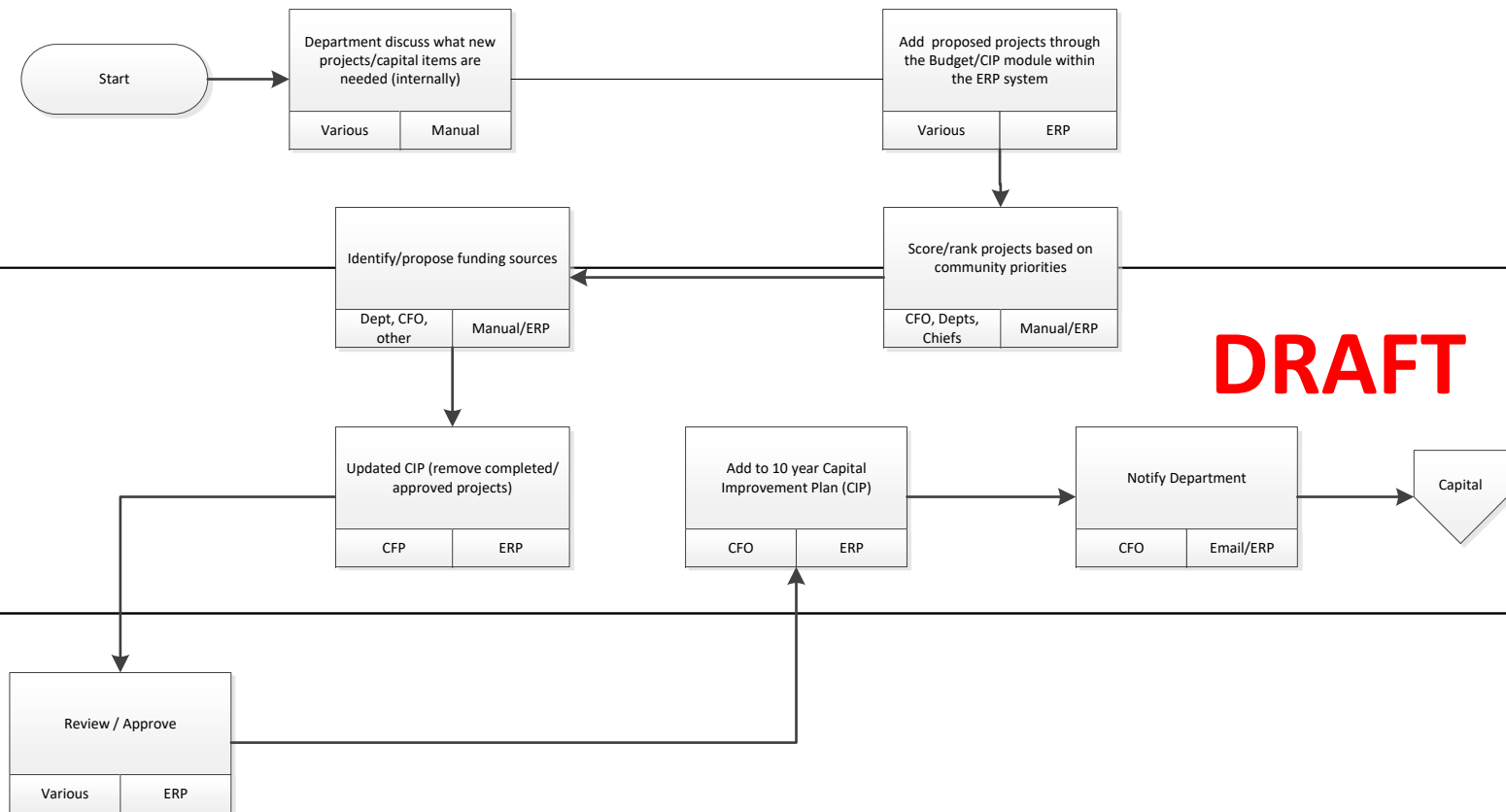


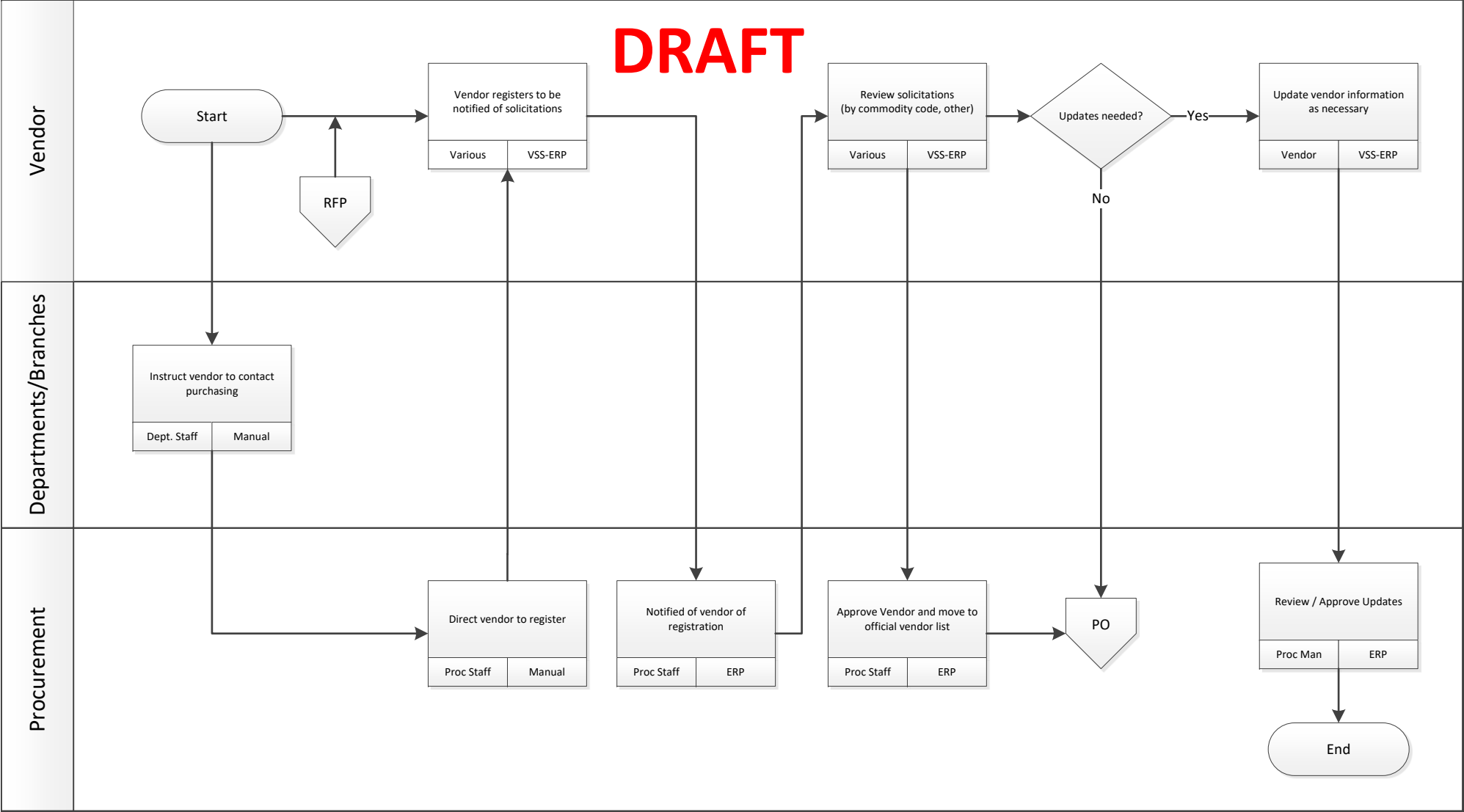
DRAFT

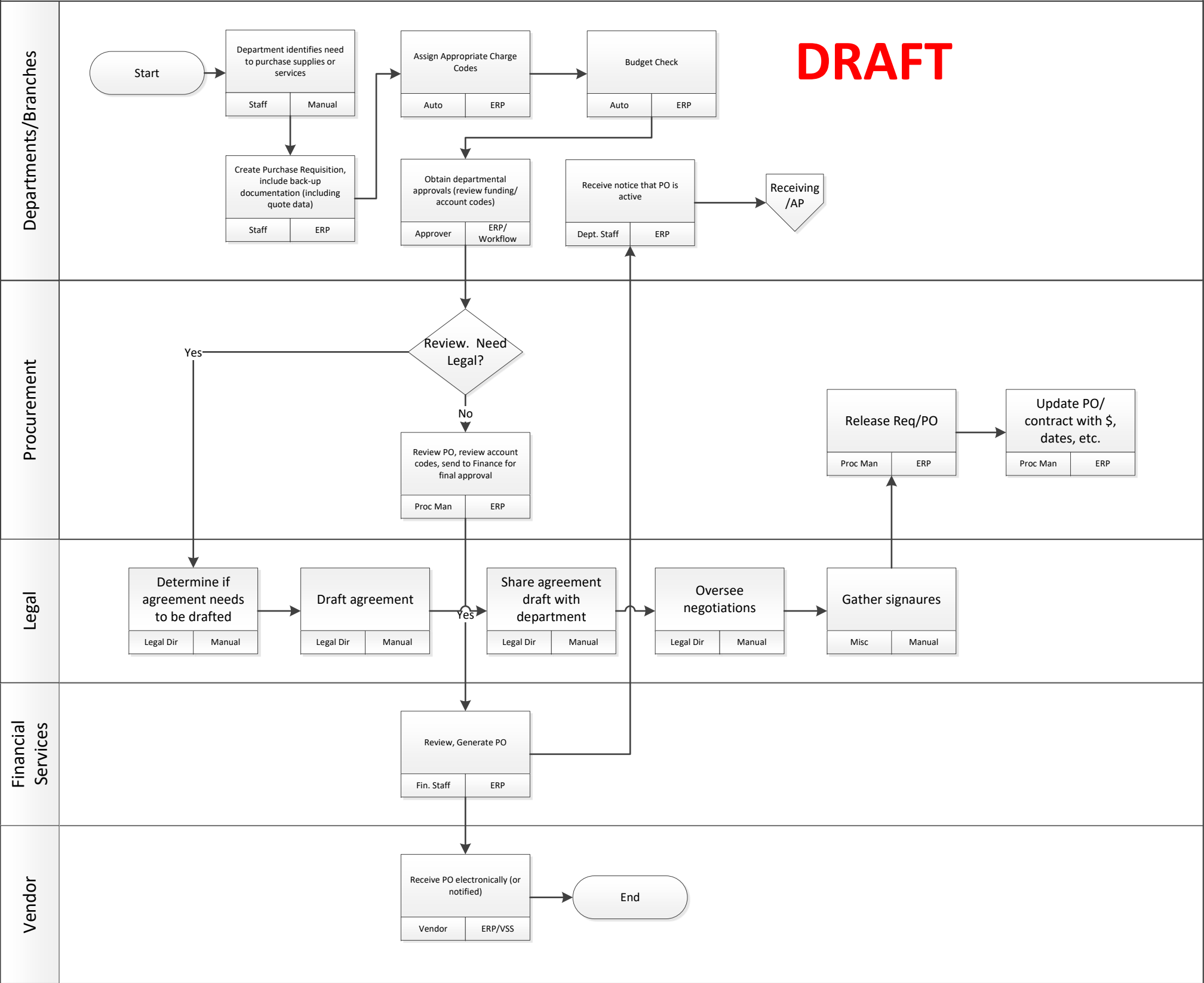




Budget
Capital Improvement Plan (CIP) Development
FUTURE



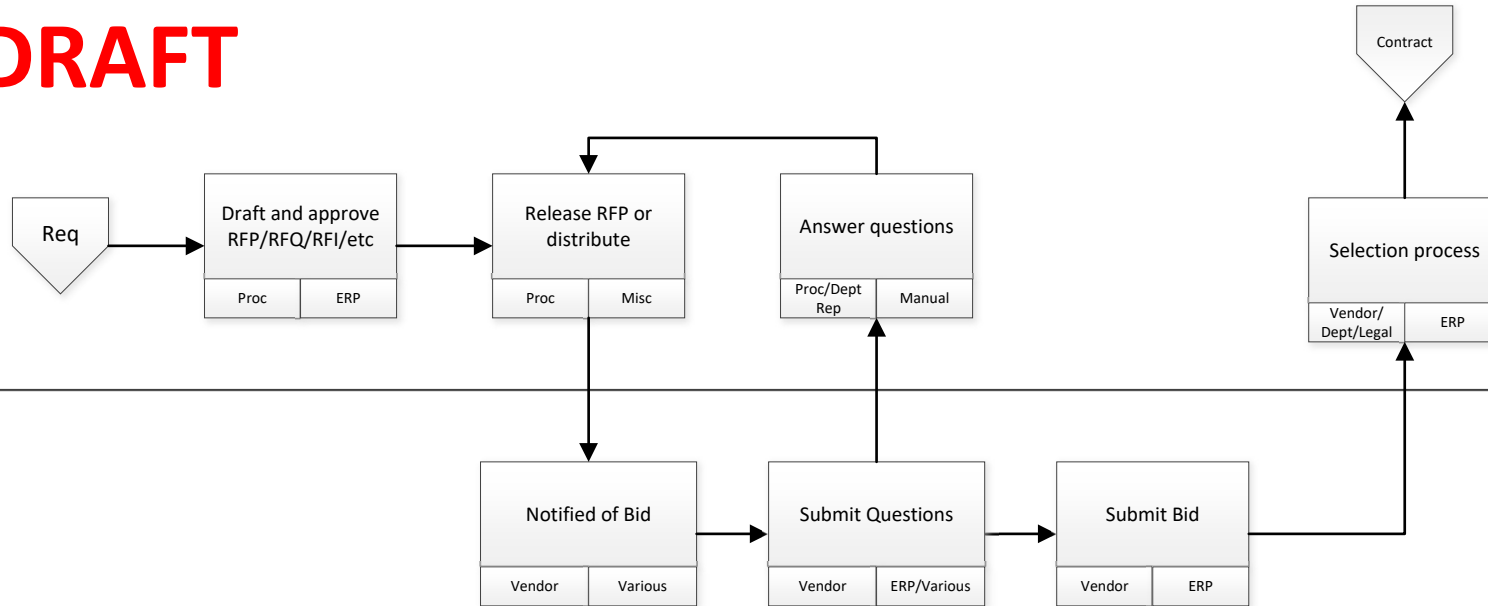




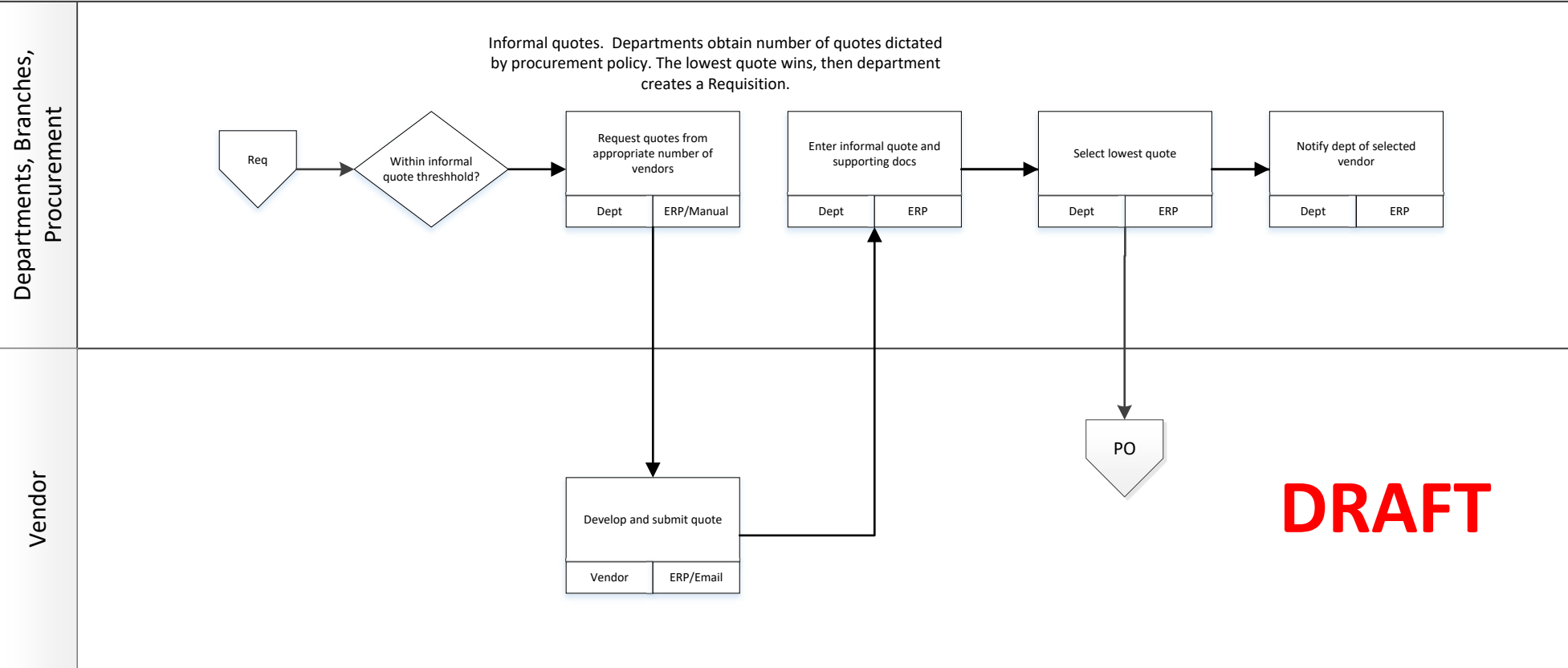
DRAFT

Procurement

Vendor

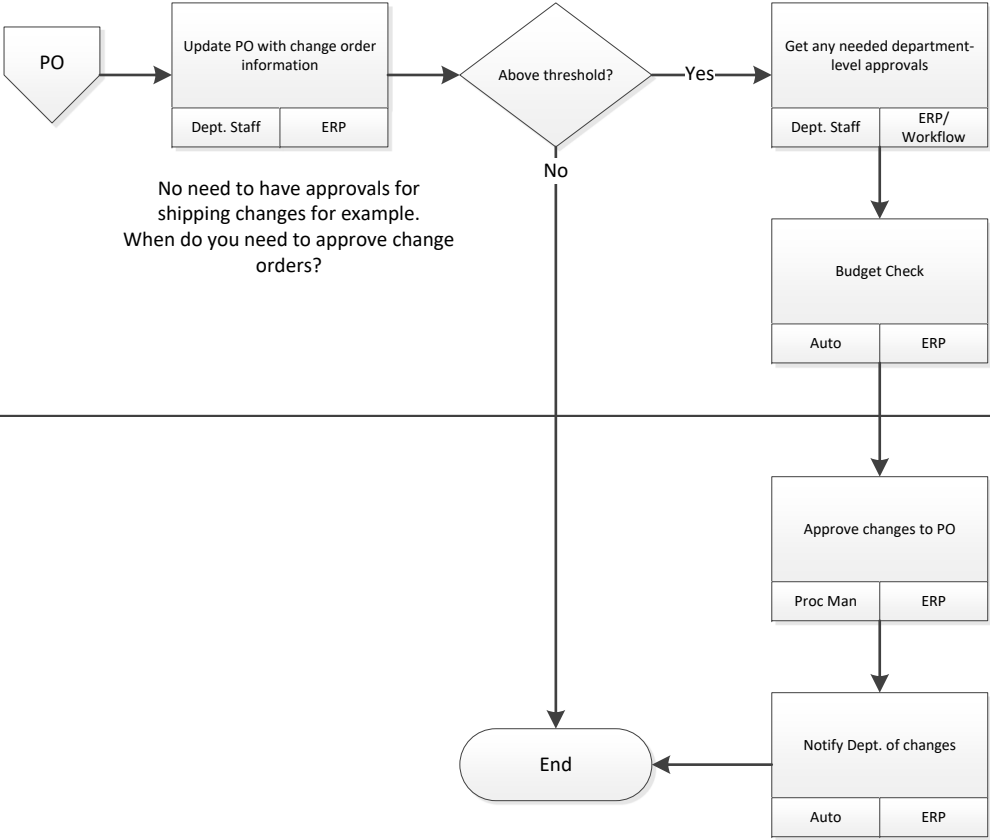


GFOA recommends that all purchases, including those that will require formal solicitation, go through the requisition process. This will help users to keep track of where in the cycle the requisition may be.



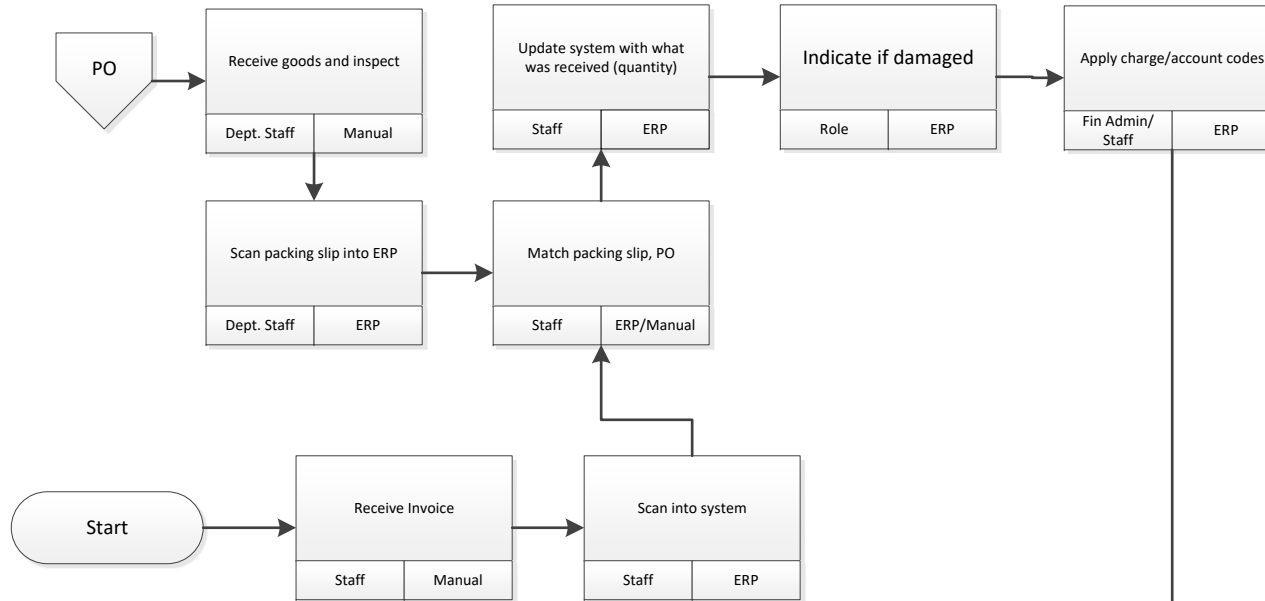
DRAFT

Departments/Branches



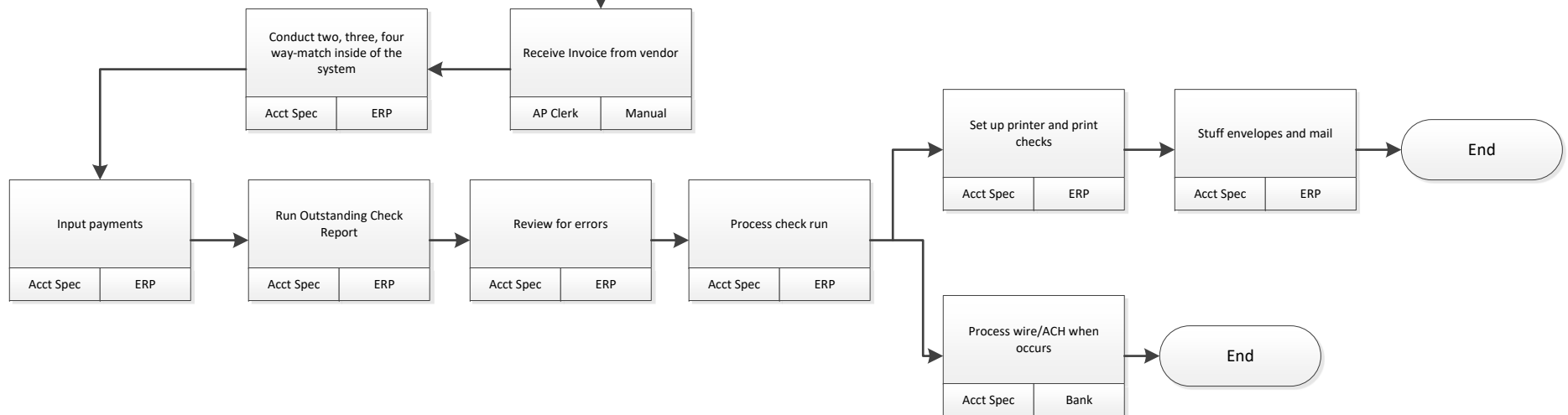
Procurement

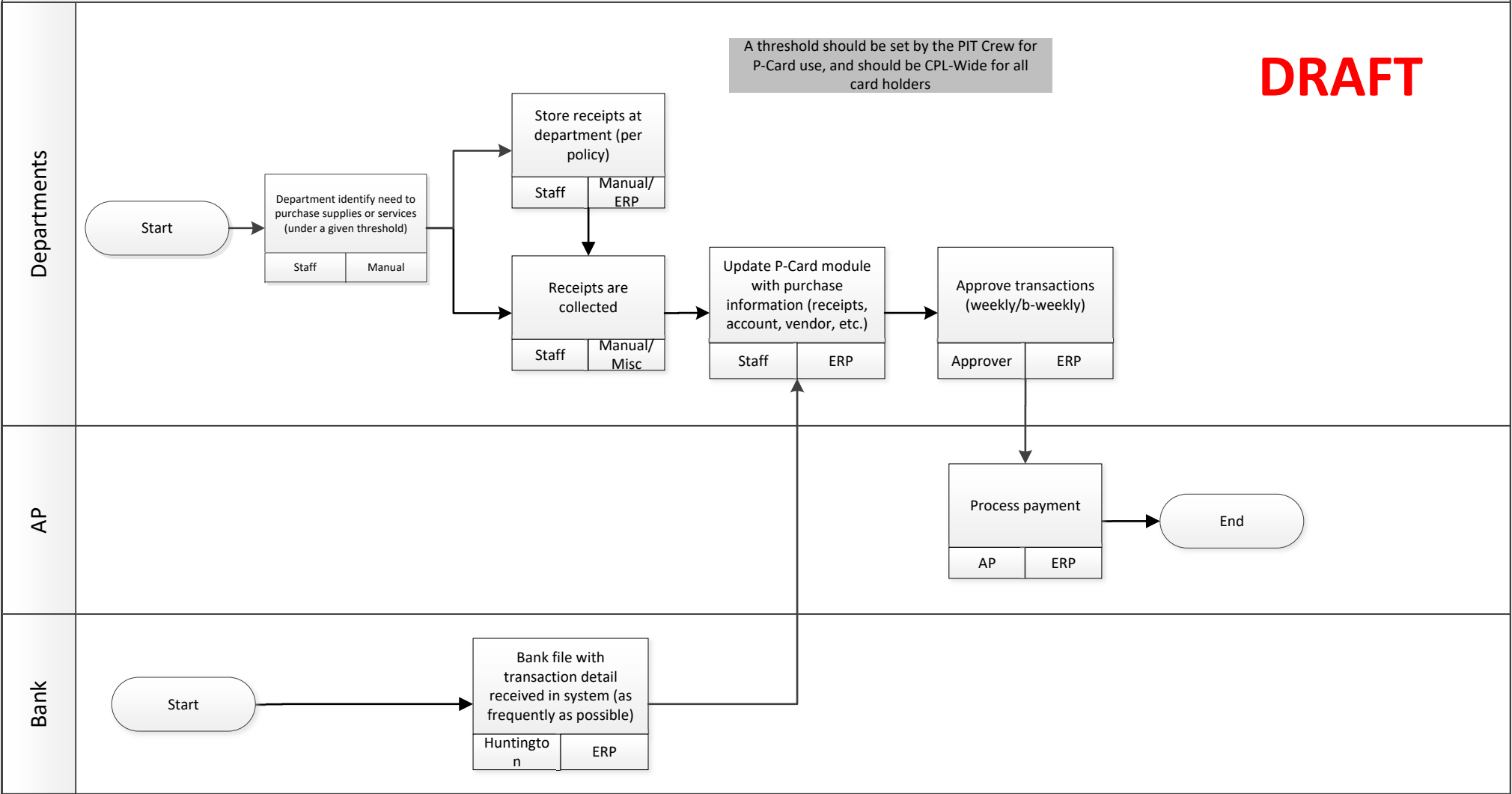
Departments/Branches/Stock Room



DRAFT

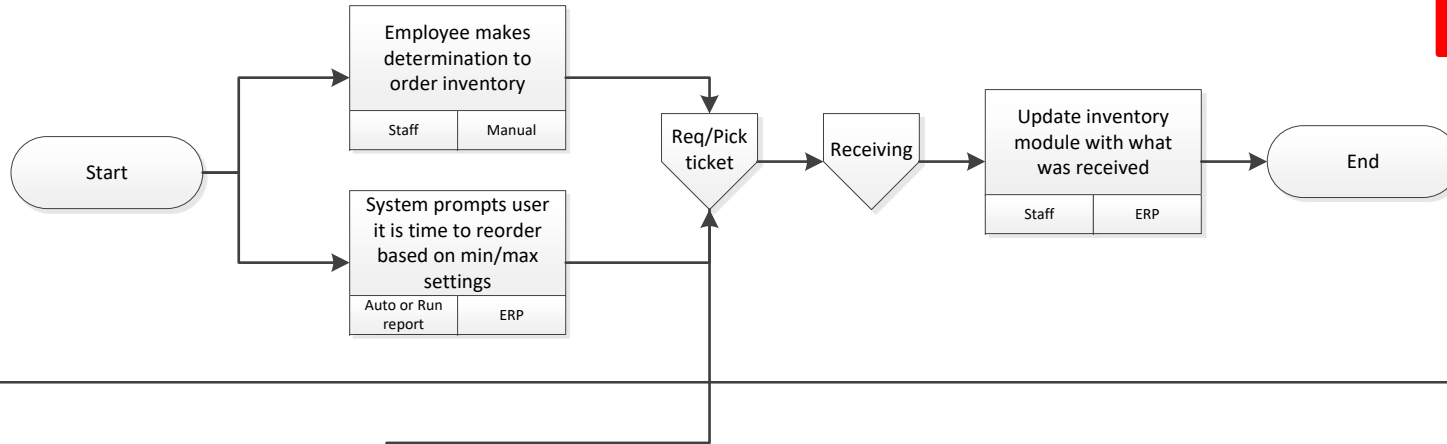
Accounting/Finance



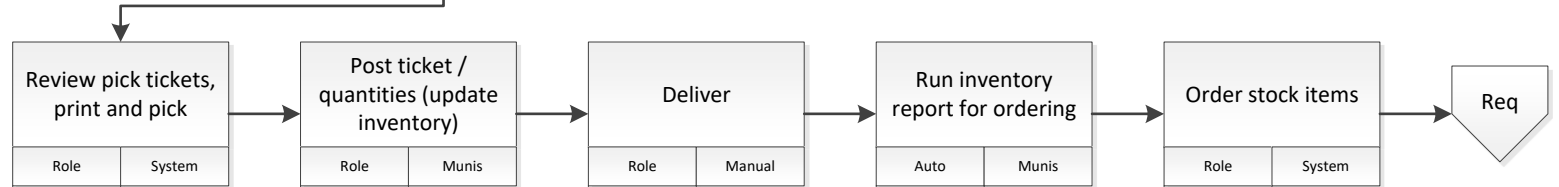


DRAFT

Departments

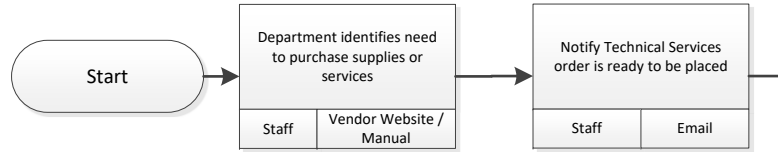


Stock Room

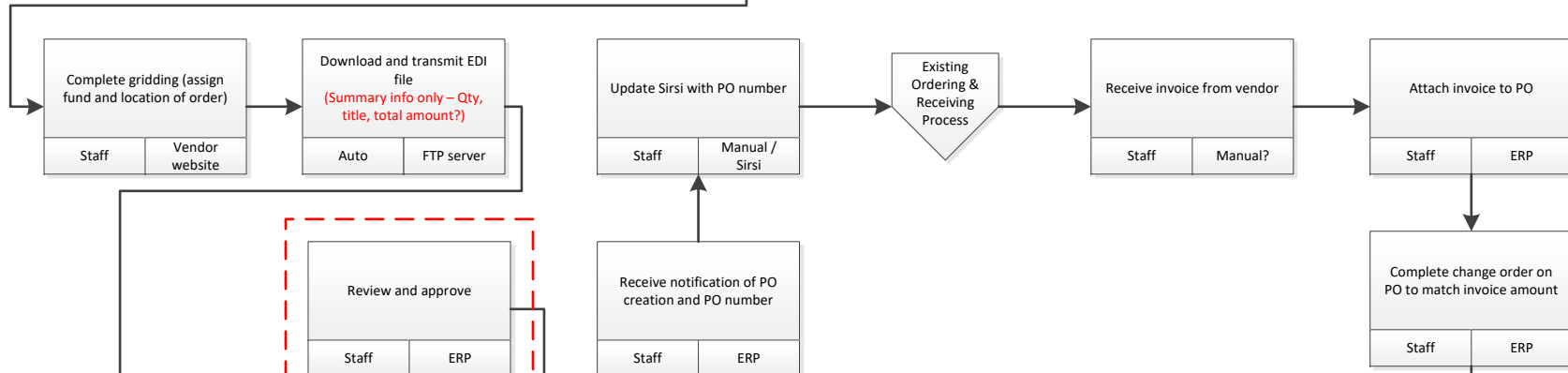


DRAFT

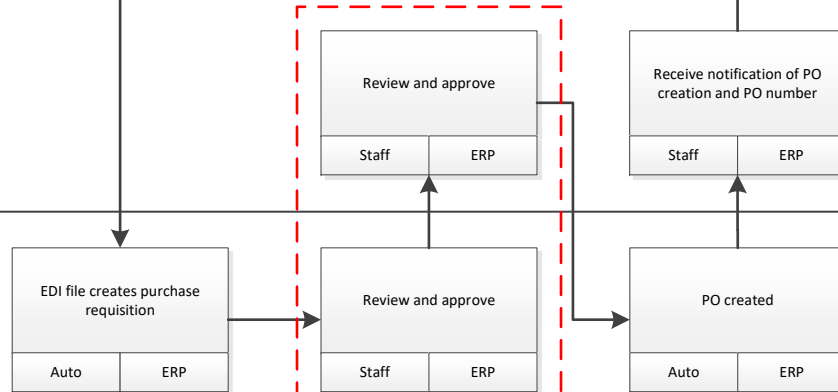
Branches



Technical Services / Sirsi



Finance / ERP

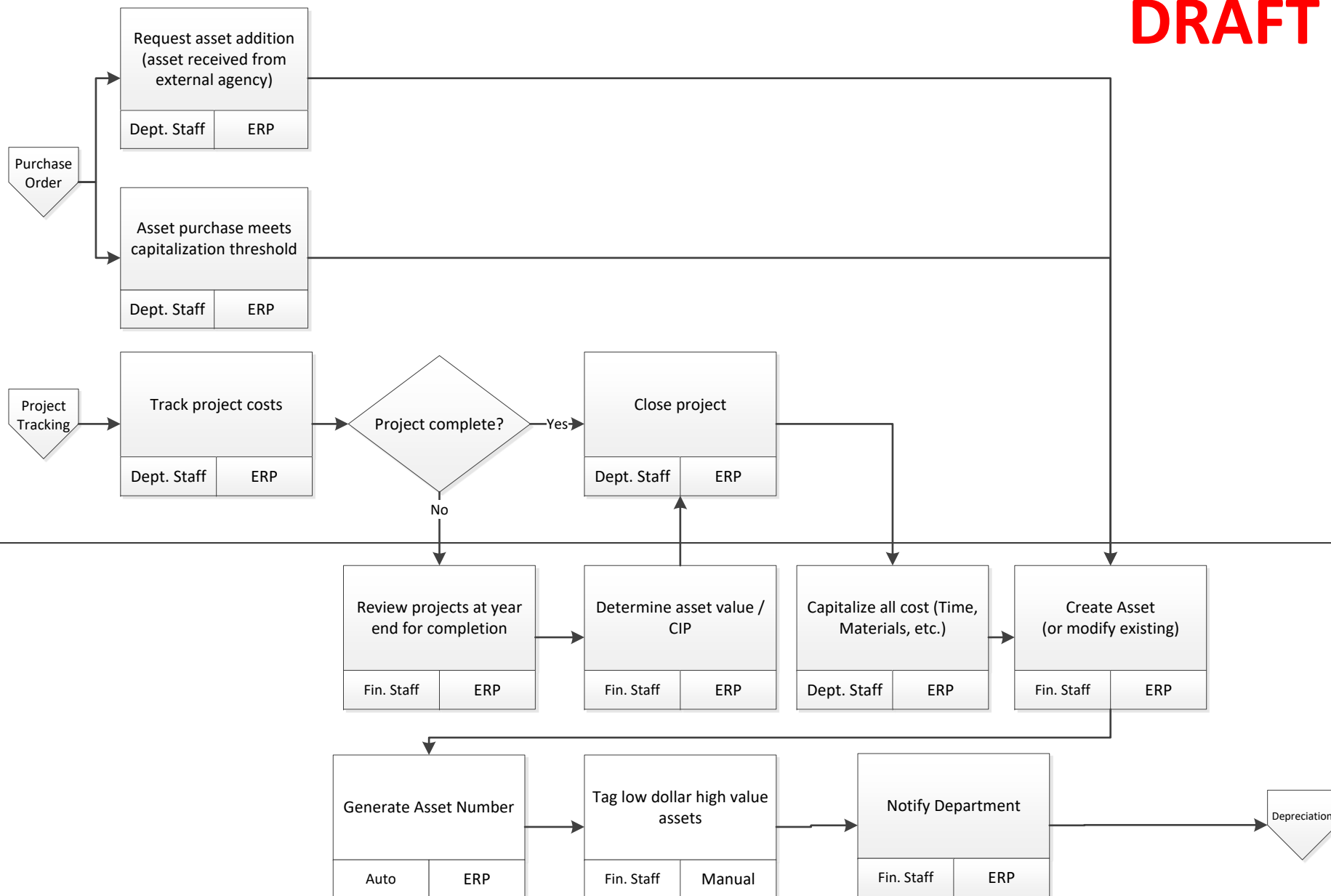


Thresholds TBD

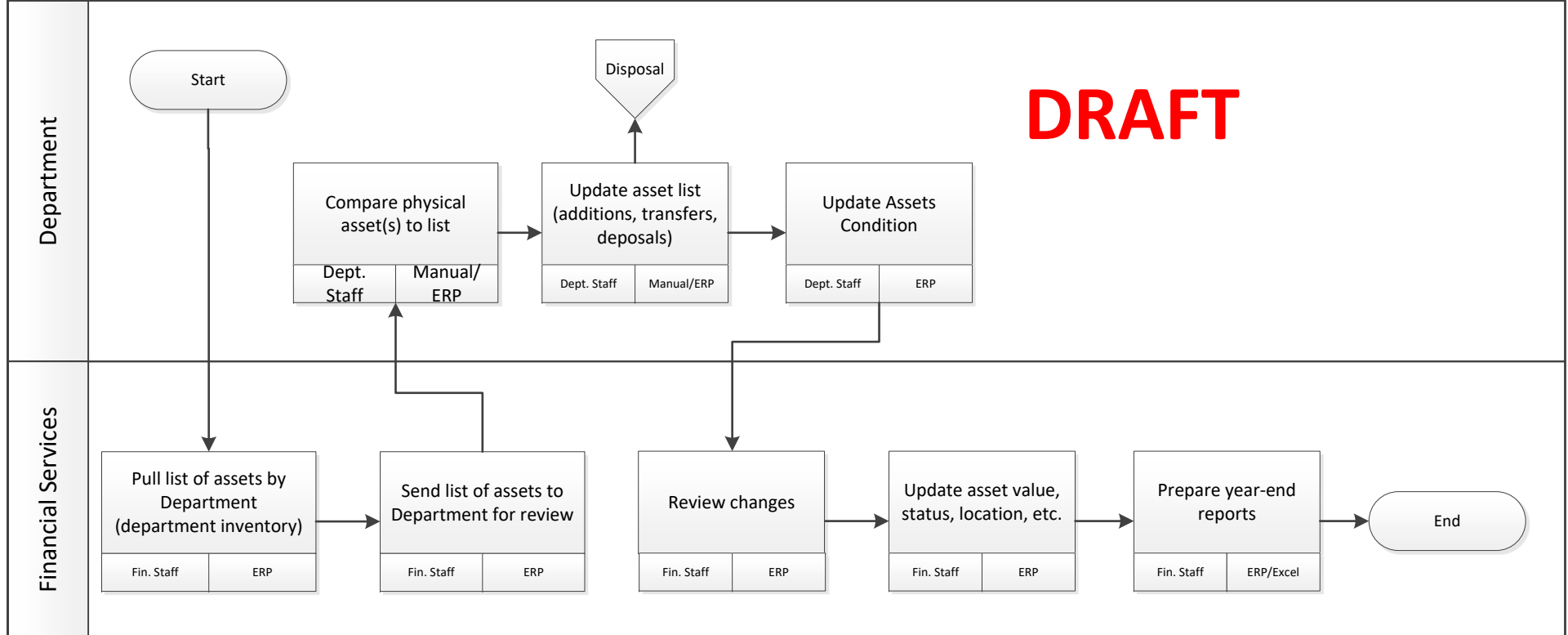
DRAFT

Department

Financial Services



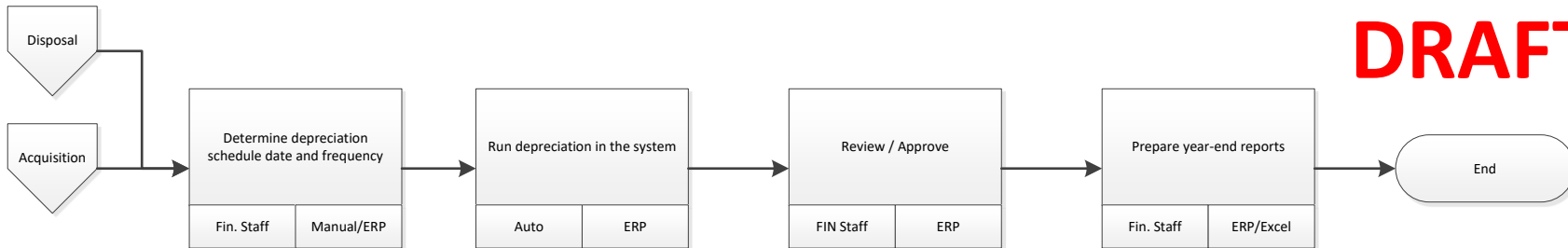
DRAFT



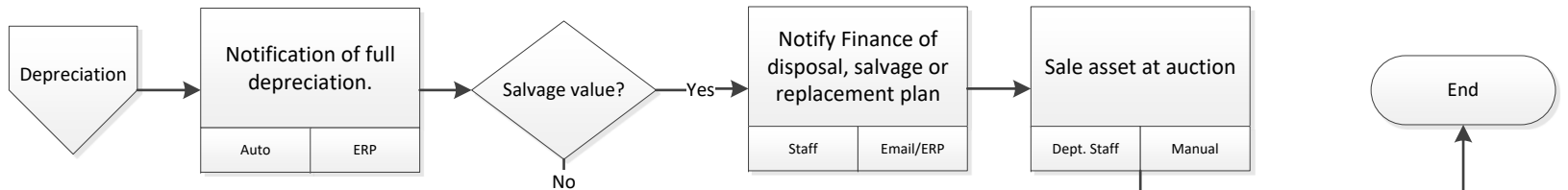
Capital Asset Management Depreciation FUTURE



Finance

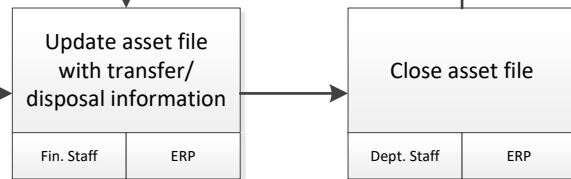


Department

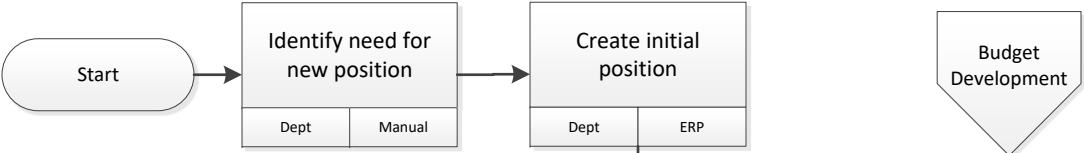


Finance

DRAFT



Departments/
Branches

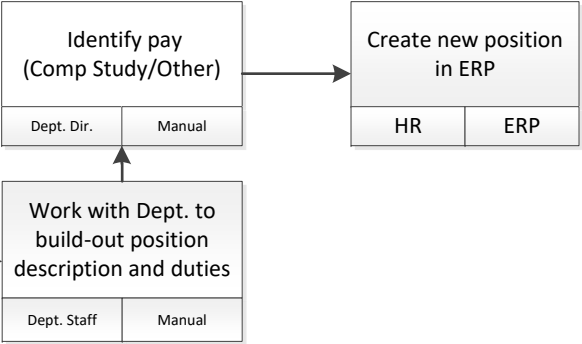


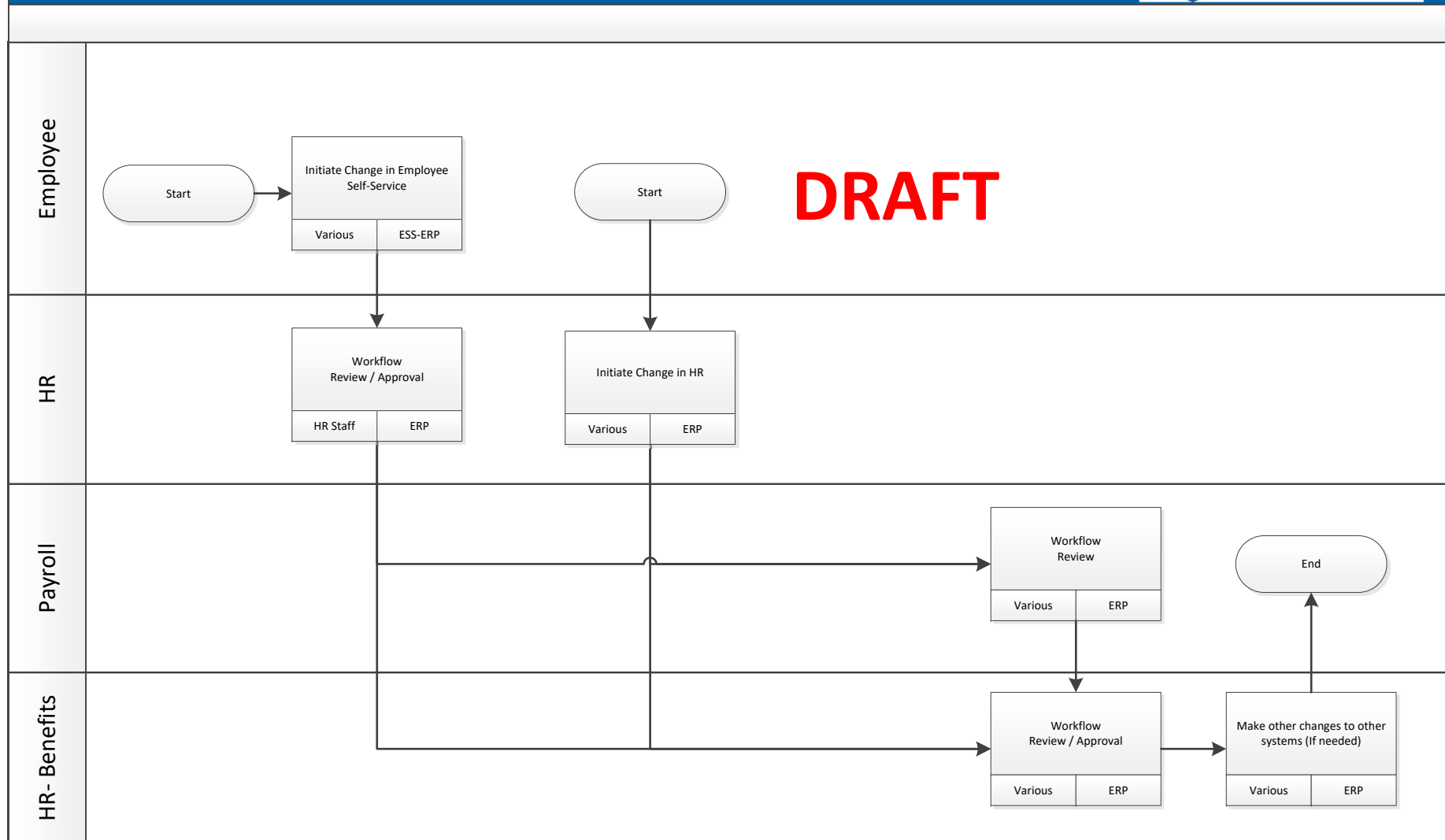
DRAFT

Finance

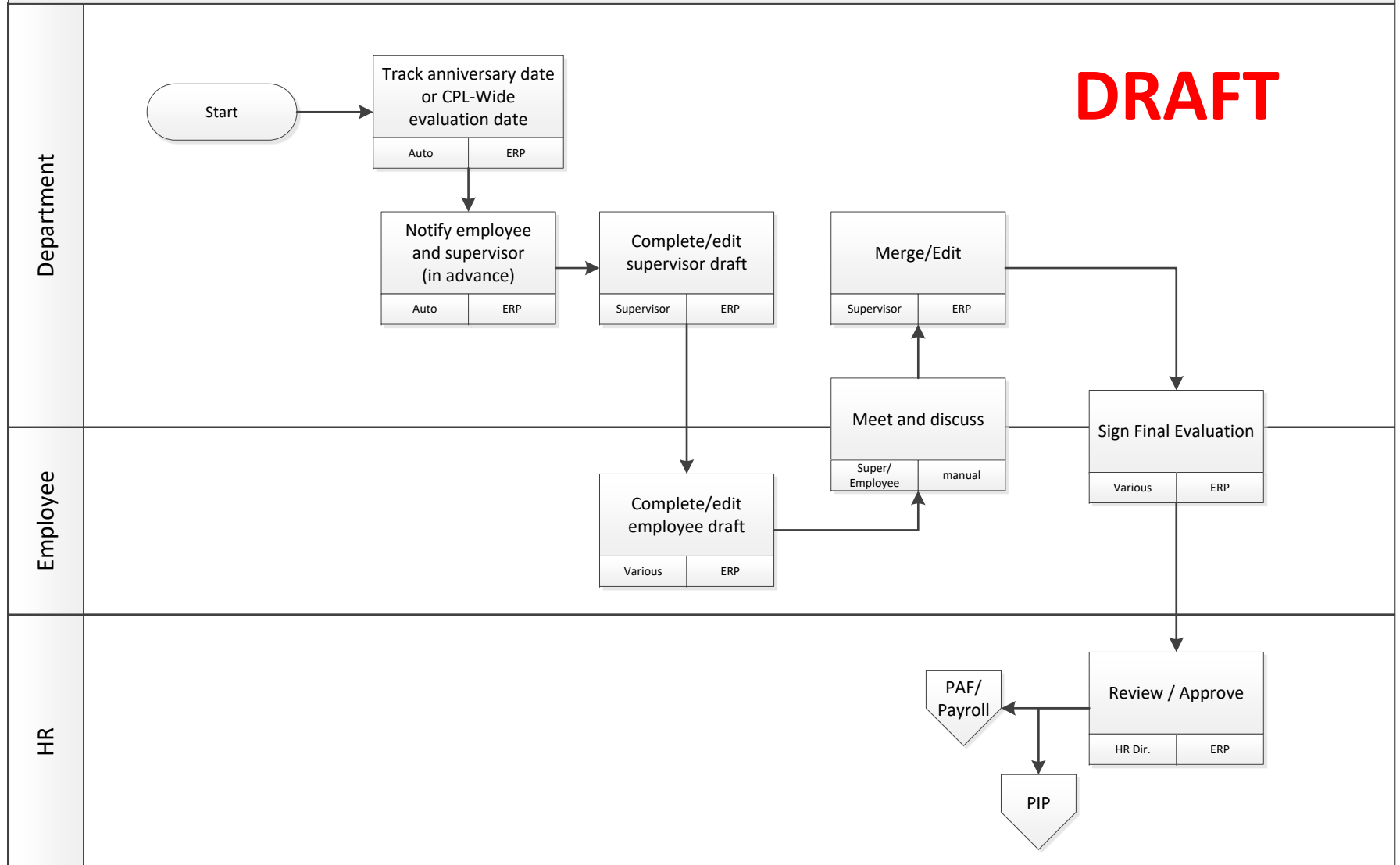


Human Resources





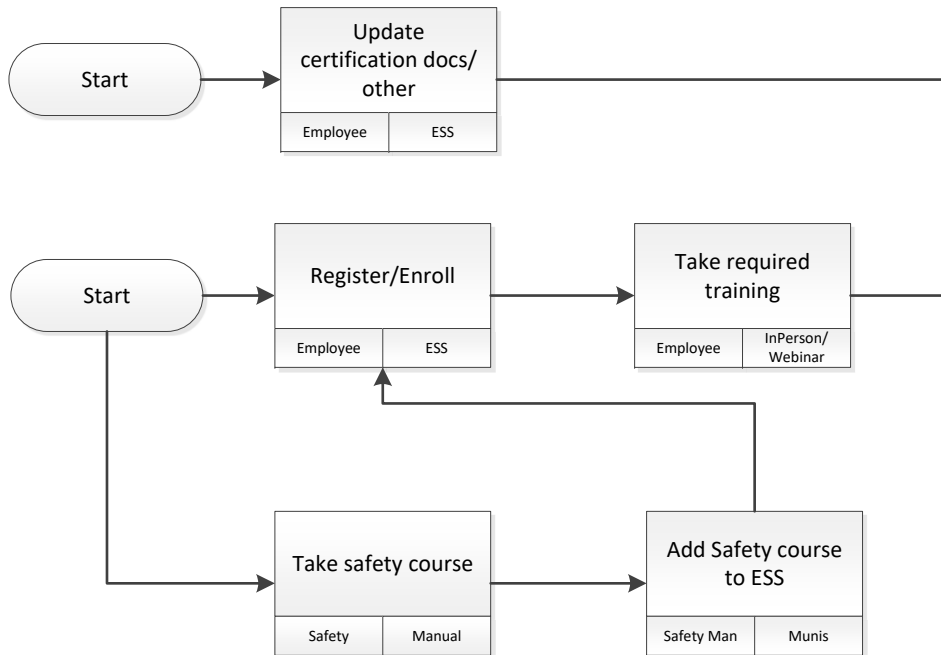
DRAFT



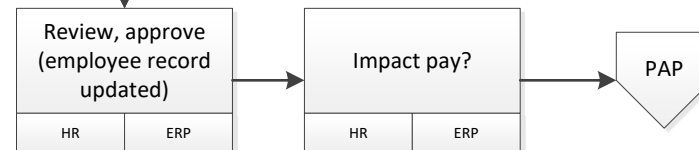
DRAFT

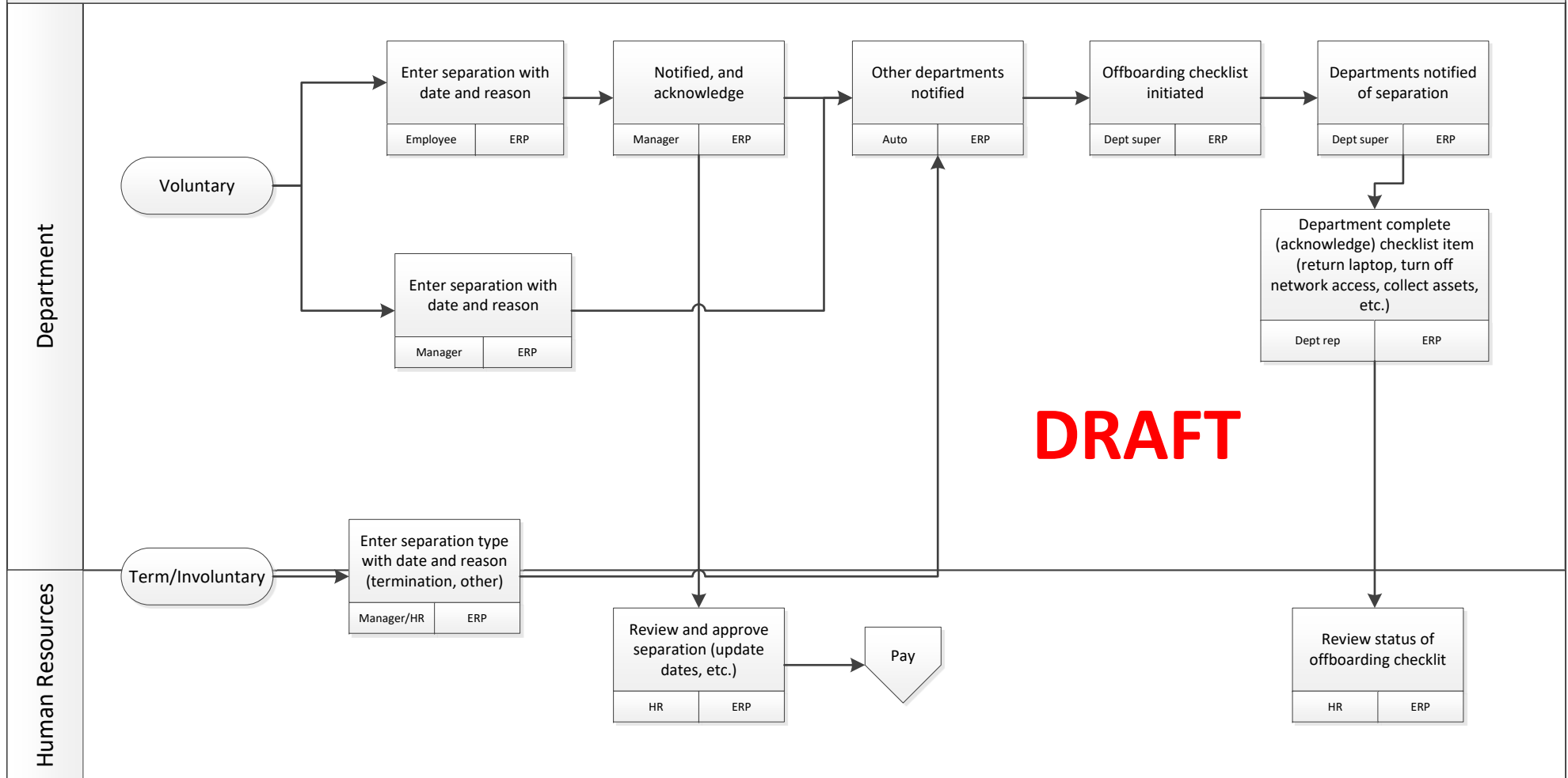
Process TBD – Depends on ERP modules purchased. Many ERP systems offer training management modules where employee training can be tracked directly. Some ERP systems also have learning management functionality where employees can initiate self-paced learning courses/training plans. At a minimum, the CPL should ensure that all trainings and certifications are recorded in the primary employee file in a future solution.

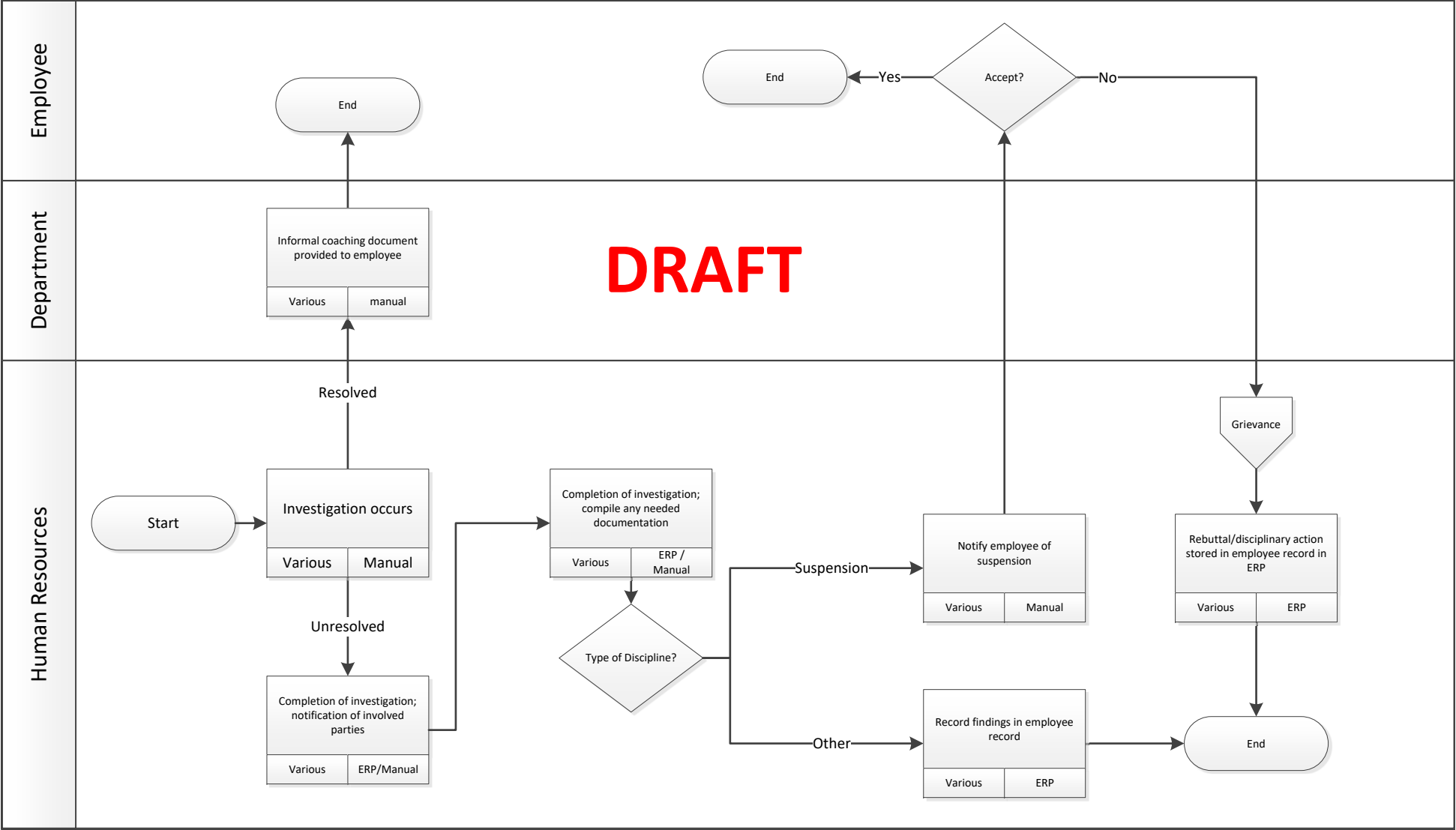
Departments



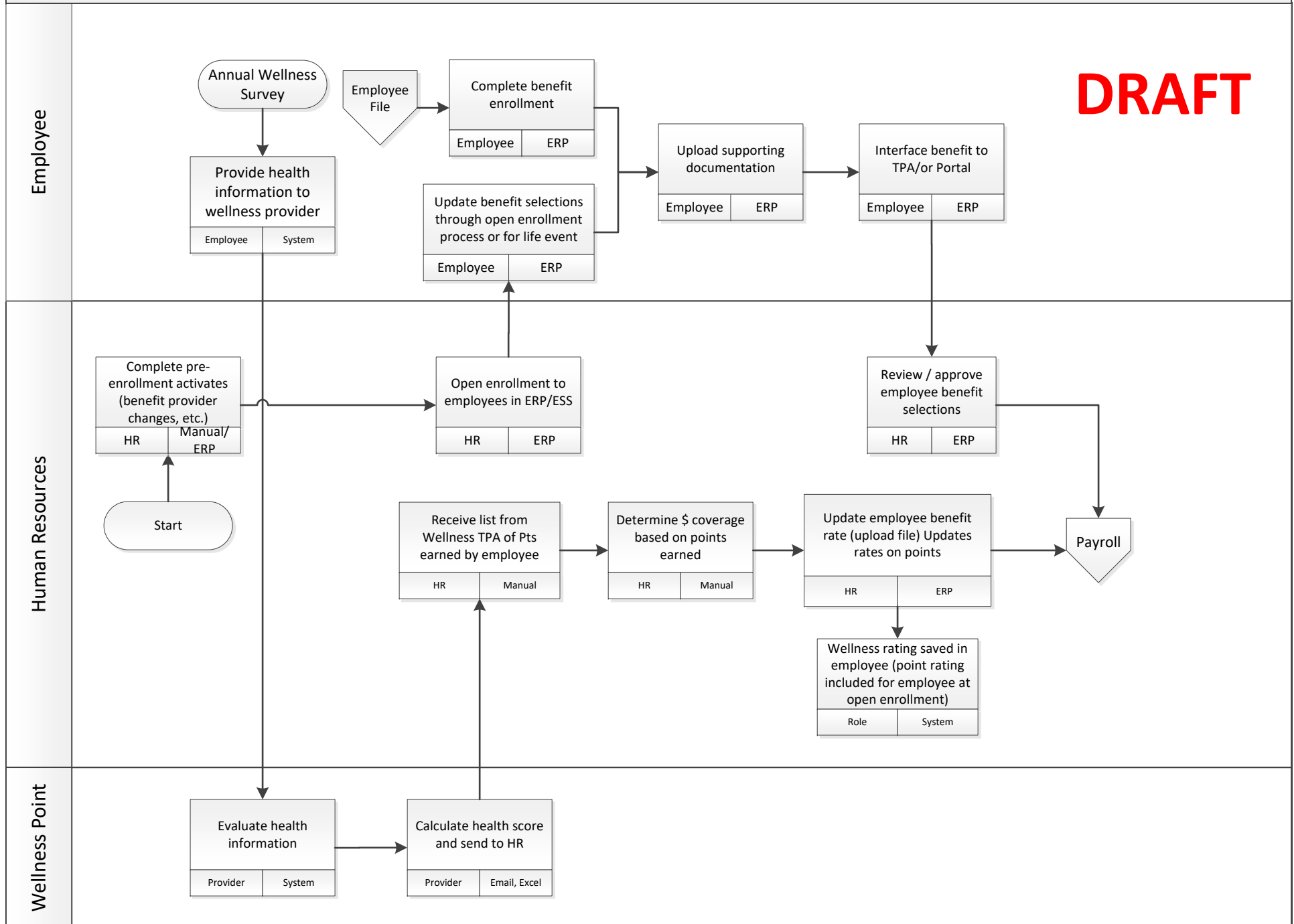
Human Resources



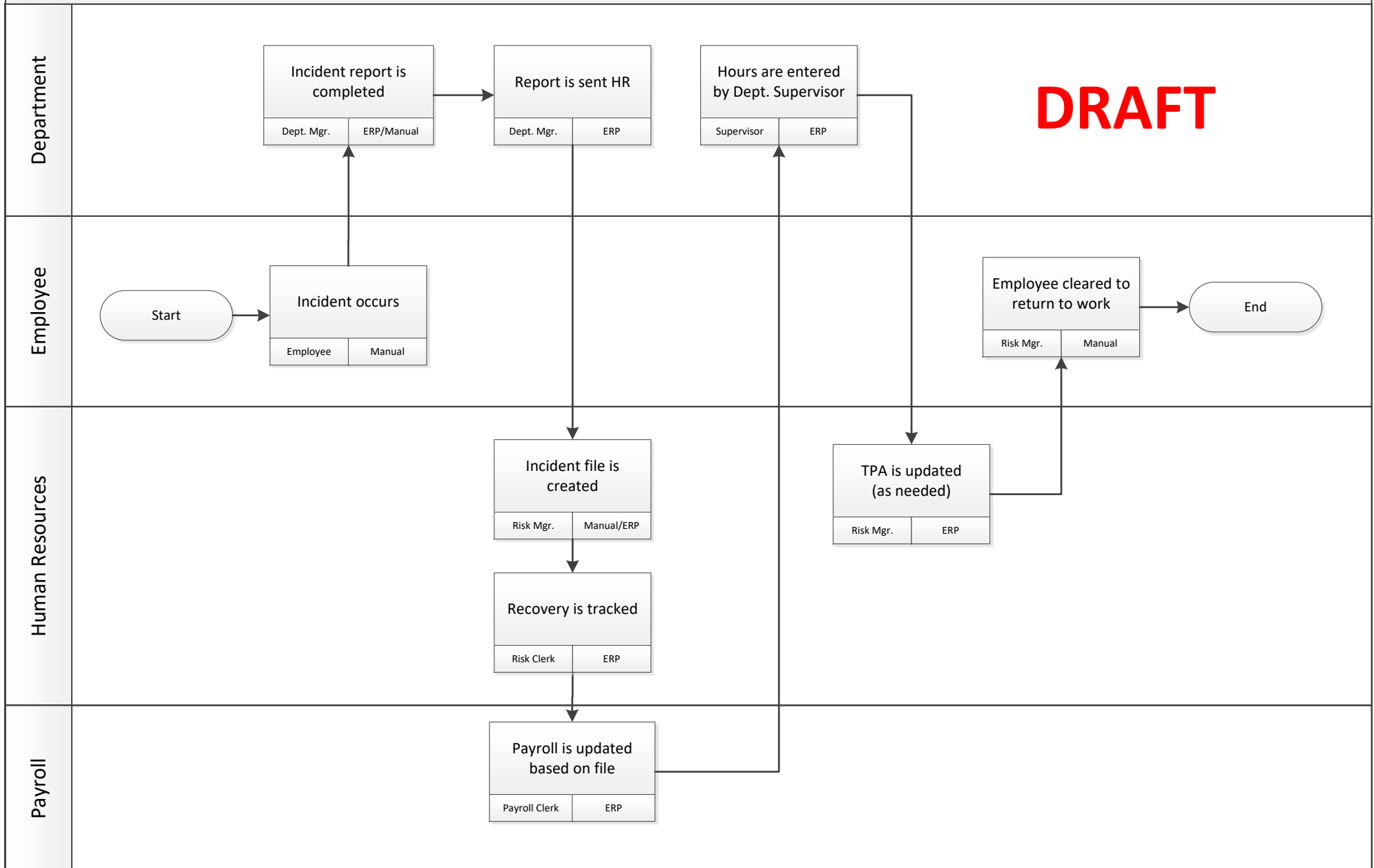


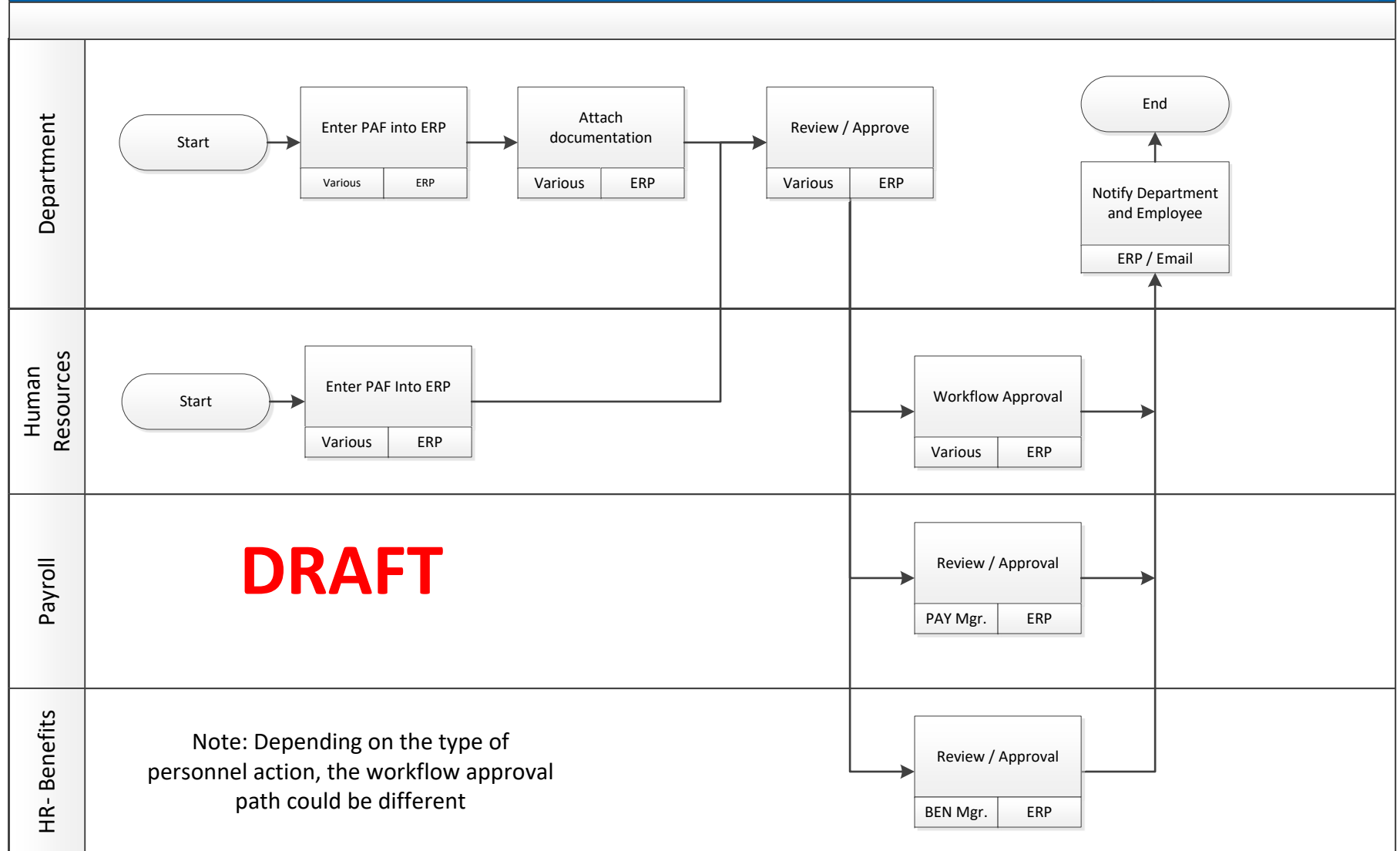


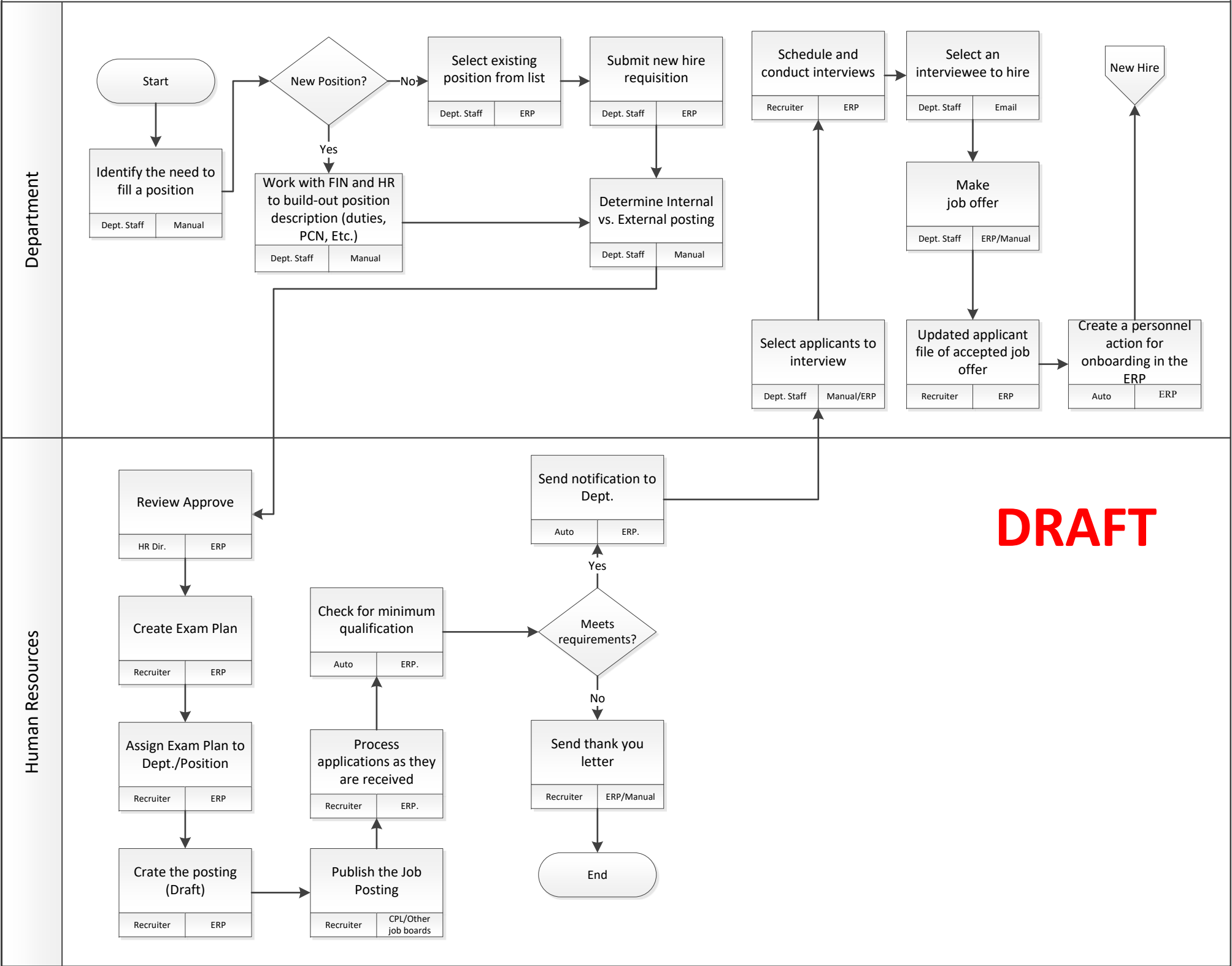
DRAFT



DRAFT

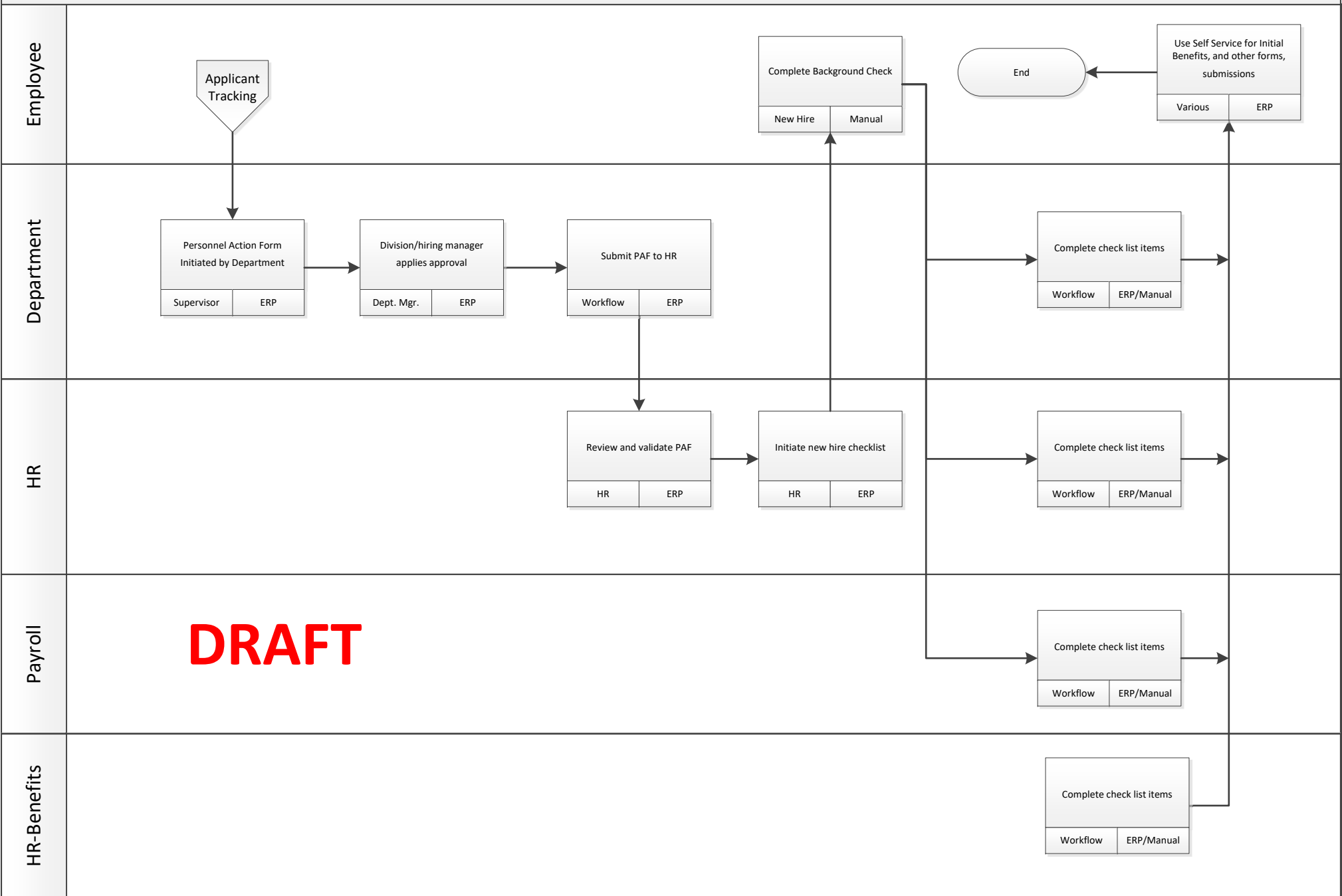






DRAFT

Personnel Actions
New Hire (Onboarding)
FUTURE



DRAFT

